



**RENAISSANCE PARK**  
KING OF PRUSSIA

# **Right of Way Improvement Project**

**Proposed Complete Streets Improvements  
for Horizon Drive & Renaissance Boulevard**

April 30, 2026 | Conshohocken Brewery KOP Tap Room



# Agenda

## Introductions

- About King of Prussia District
- Work Leading Up To Now

## Proposed Roadway & Pedestrian Improvements

- Concept A
- Concept B

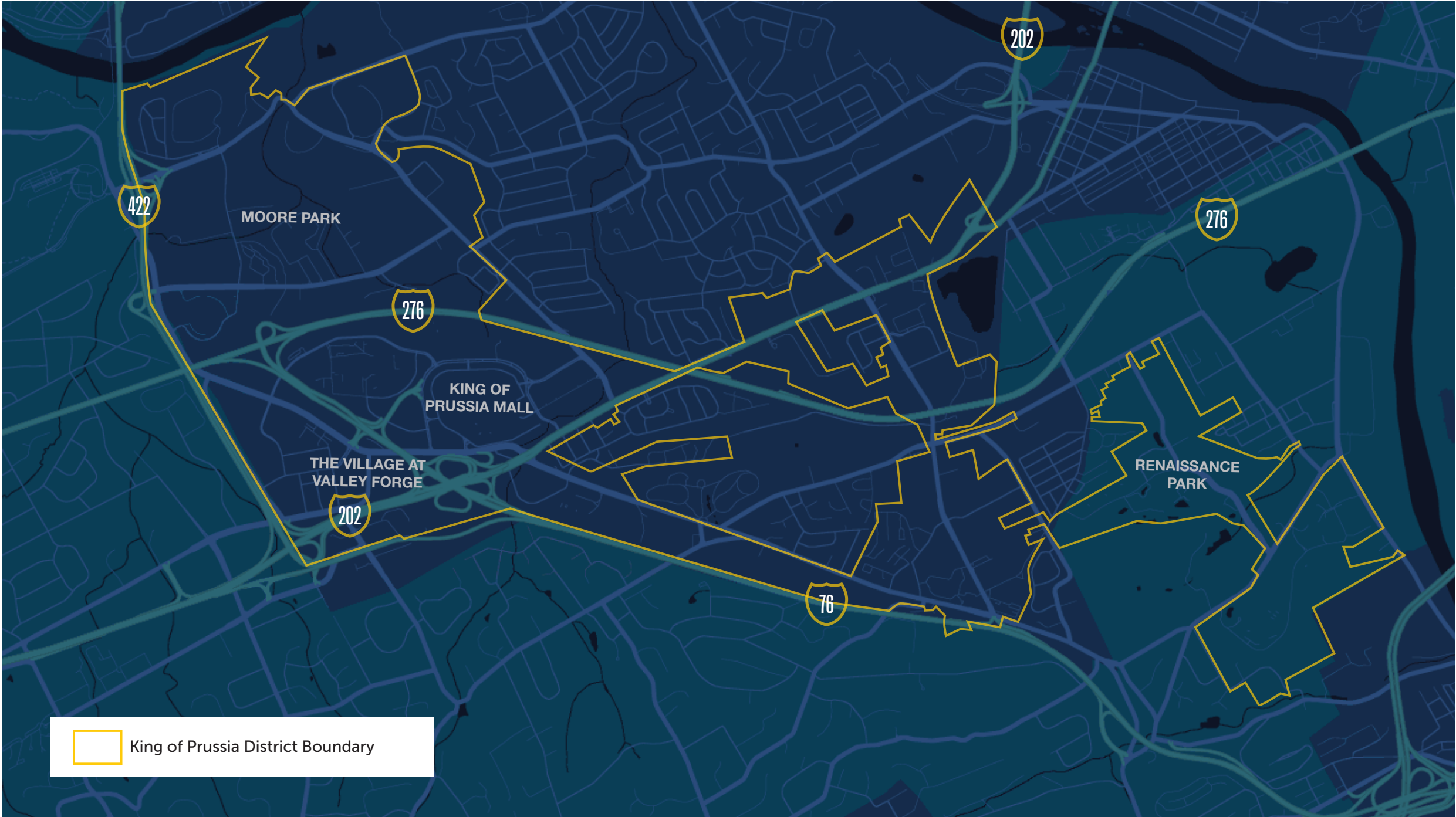
## Proposed Public Space Ideas


- Piedmont Lowlands
- Appalachian Uplands
- Coastal Plains

## Questions?

## Final Remarks & Upcoming Events

## Discussion & Input Around the Boards



 King of Prussia District Boundary



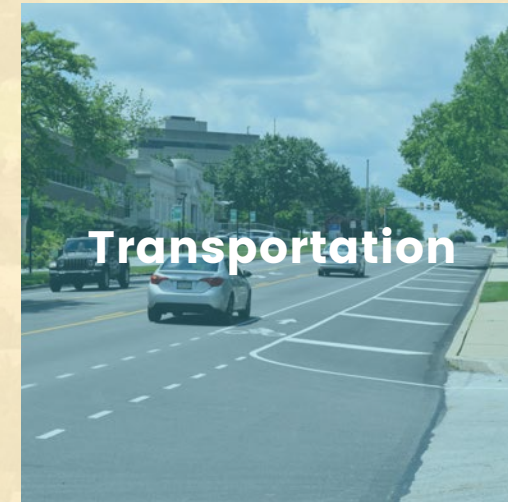
## **Mission**

**King of Prussia District accelerates economic growth by making King of Prussia vibrant, attractive and prosperous.**

## **Vision**

**King of Prussia is Greater Philadelphia's economic powerhouse and premier location for community and commerce.**

# Programs





# King of Prussia District



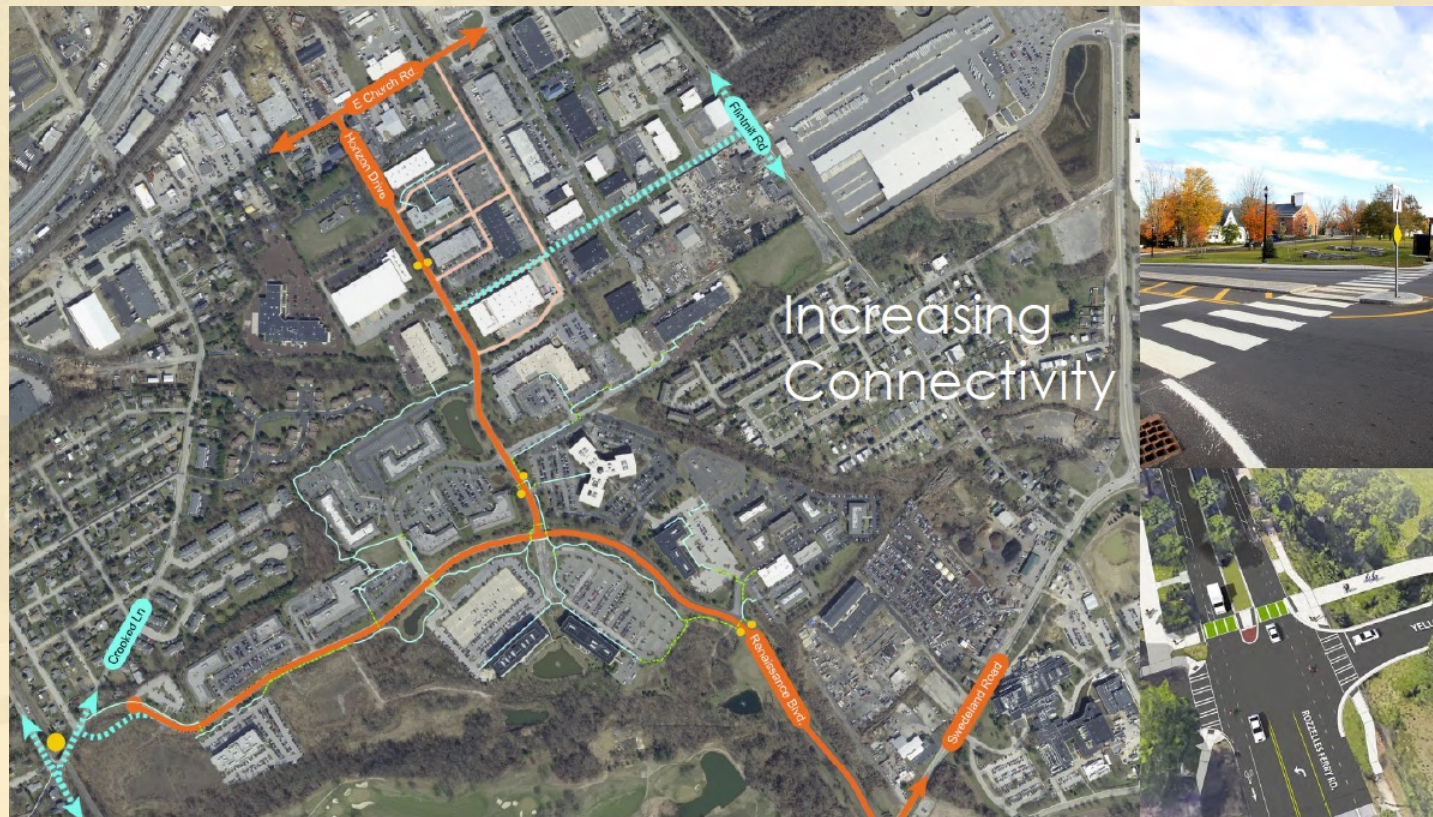
## Business Improvement District & Renaissance Park

- Upper Merion Township expanded King of Prussia District's boundary to include Renaissance Park in 2020 (including Discovery Labs' Innovation 411 campus & GSK campus).
- 33 commercial buildings across 333 acres of industrial & commercial space (not including Discovery Labs' Innovation 411 campus & GSK campus).
- 2M SF of commercial building space.
- 3,200 Employees in 2025 (Placer.ai, not including Discovery Labs' Innovation 411 campus & GSK campus).
- Renaissance Park employee home counties (over 10%):
  - 36% Montgomery County
  - 17% Philadelphia
  - 17% Chester County
  - 11% Delaware County
- 5 Data Center Projects are proposed in the area with a public hearing to be scheduled.



# King of Prussia District

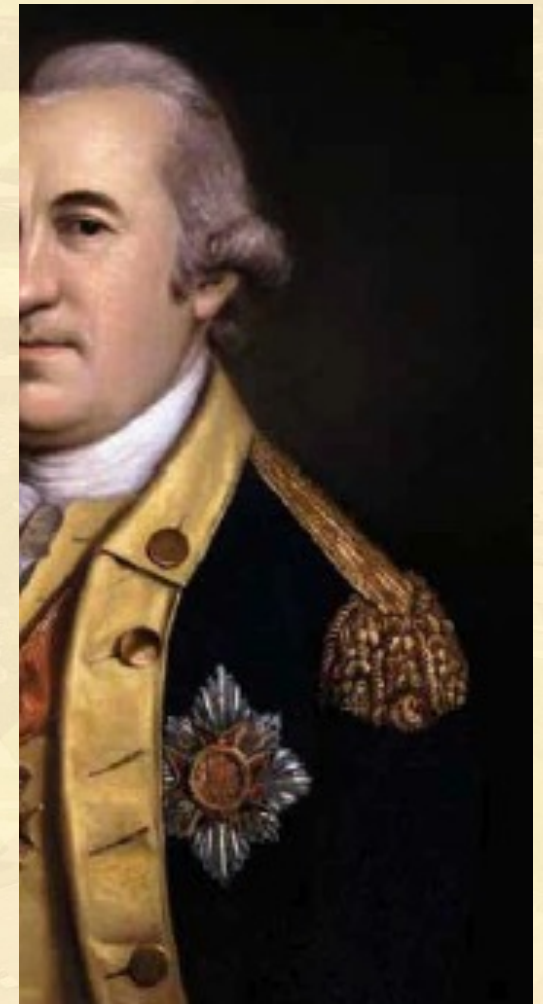
## Renaissance Park Stakeholder Engagement 2021





# King of Prussia District

## Renaissance Park Branding D2 Visioning Exercise 2021





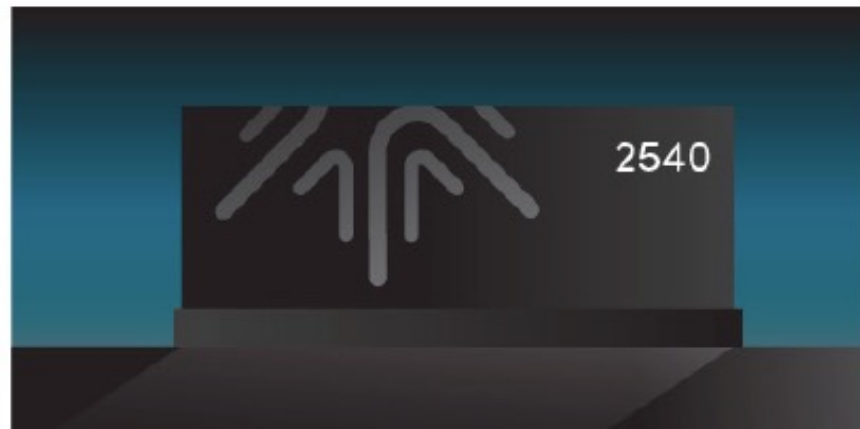
# King of Prussia District



RENAISSANCE PARK

## Renaissance Park Branding | Chosen Concept & Examples

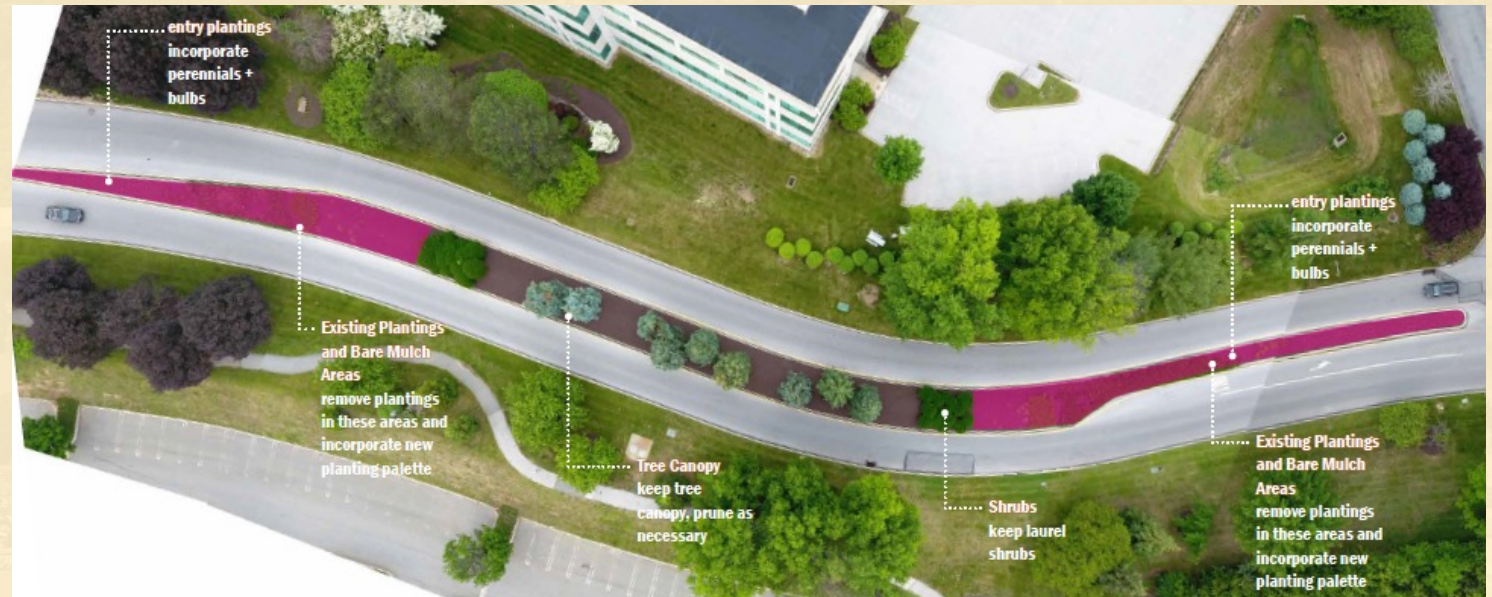
### IDENTITY USAGE CONCEPTS





# King of Prussia District

## Renaissance Boulevard Median Plantings 2022





# King of Prussia District

## Renaissance Park Gateways 2023

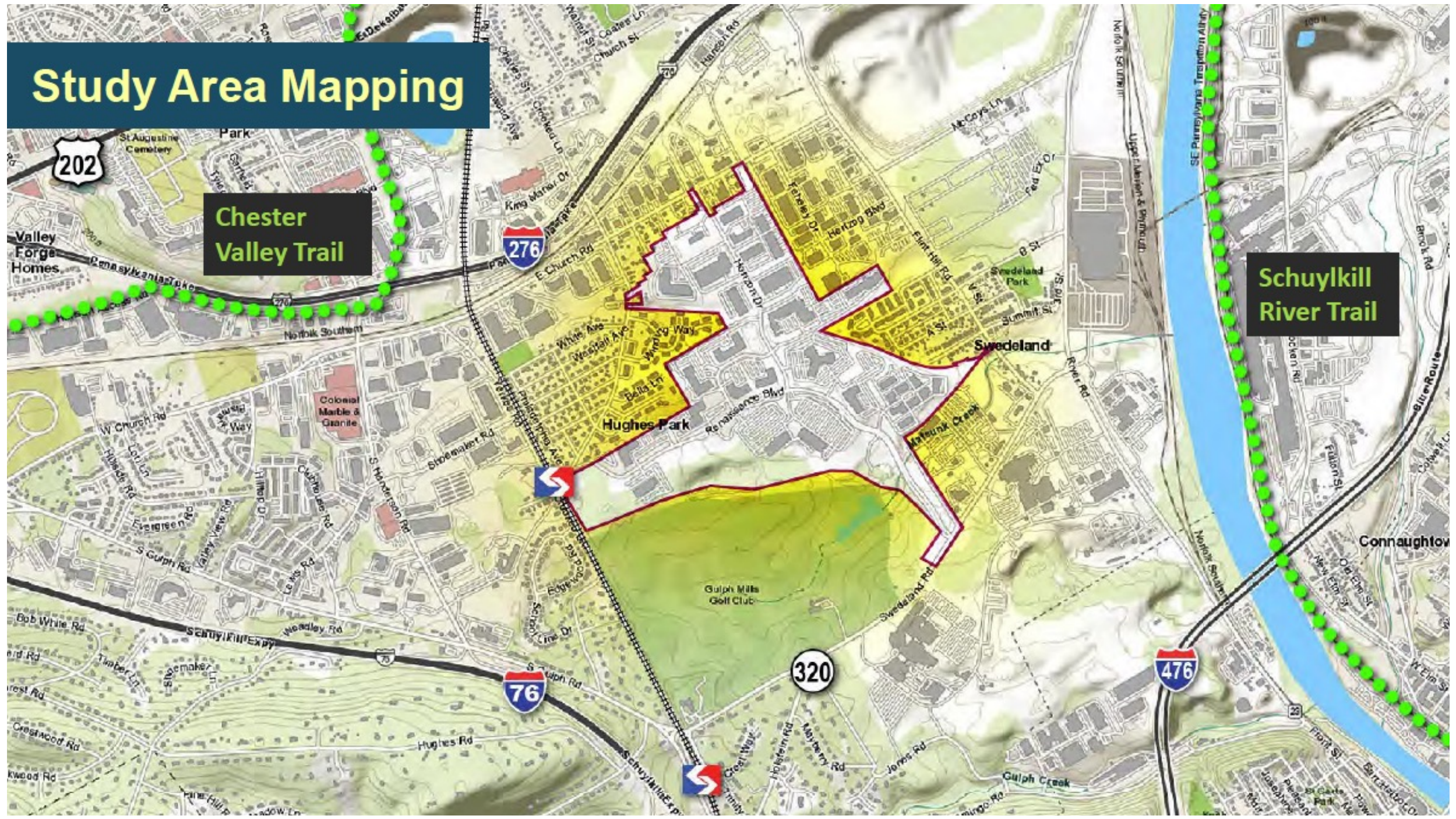




# Renaissance Park Wayfinding & Address Signs

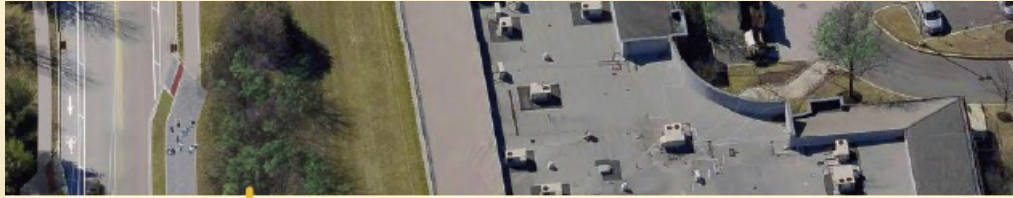


# Study Area Mapping



**Chester Valley Trail**

**Schuylkill River Trail**

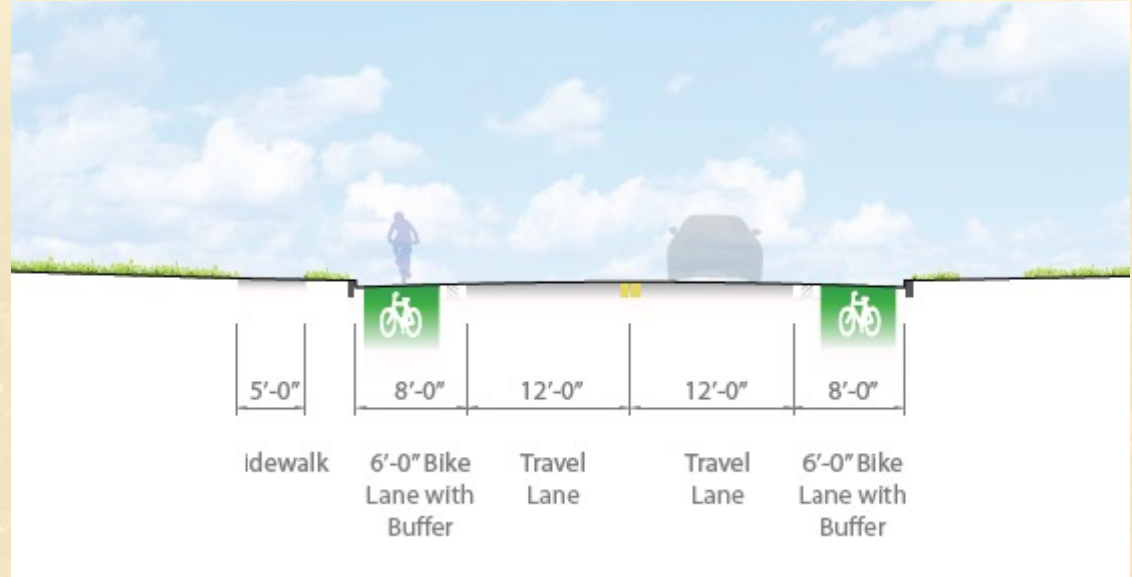


# RENAISSANCE PARK

## Connectivity Master Plan



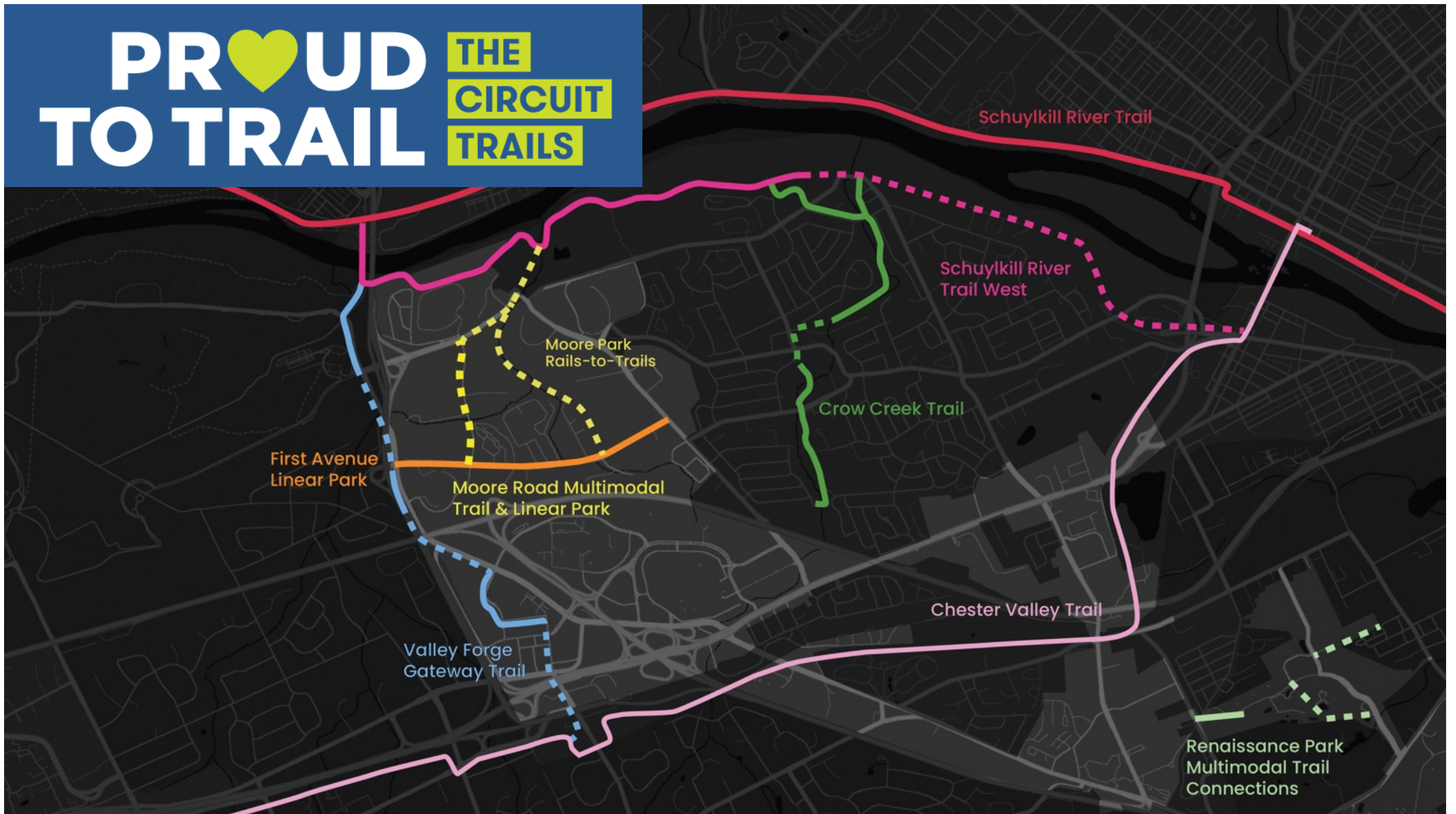
KING OF PRUSSIA DISTRICT





# PROUD TO TRAIL

## THE CIRCUIT TRAILS



First Avenue  
Linear Park

Moore Road Multimodal  
Trail & Linear Park

Valley Forge  
Gateway Trail

Moore Park  
Rails-to-Trails

Crow Creek Trail

Chester Valley Trail

Schuylkill River Trail

Schuylkill River  
Trail West

Renaissance Park  
Multimodal Trail  
Connections



## Boles Smyth Associates (BSA)



Jack Smyth, Jr., P.E, Project Manager/Lead Engineer

Team includes:

**Chester Valley Engineers (CVE)**

- streetscape/open space design, lighting design

**A.D. Marble & Company (ADM)**

- Environmental Resource Evaluations/Clearance Support

**Keystone Acquisition Services Corporation (KAS)**

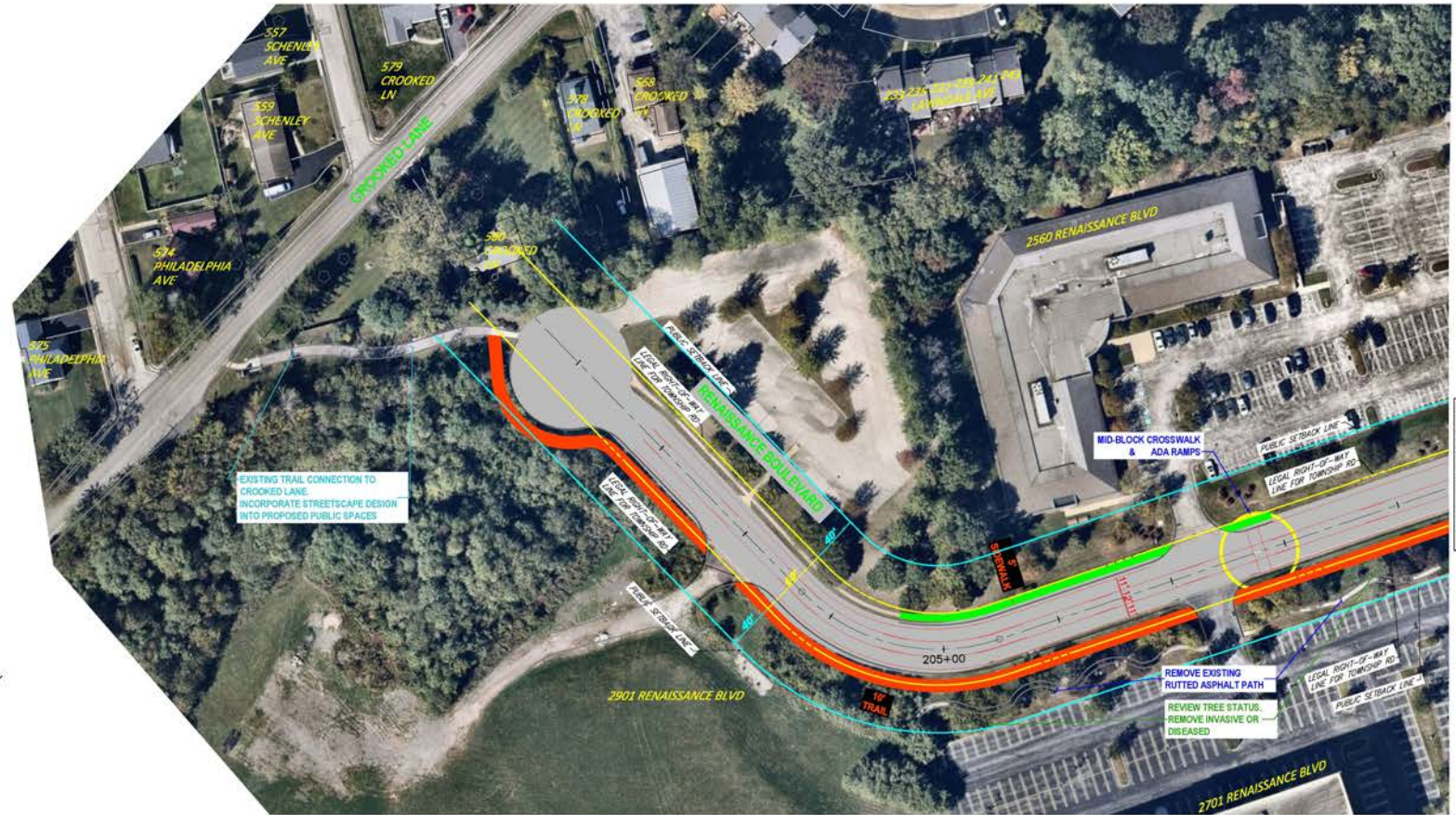
- Right-of-Way (ROW) Acquisition Services



**KING OF PRUSSIA DISTRICT  
RENAISSANCE PARK  
ROADWAY PLAN**



DISTRICT	COUNTY	ROUTE	SECTION	SHEET
6-0	MONTGOMERY	0000	RENN	1 OF 7
UPPER MERION TOWNSHIP				
REVISION NUMBER	REVISIONS	BY	DATE	



**LEGEND:**

- █ - PROPOSED ASPHALT TRAIL
- █ - PROPOSED CONCRETE SIDEWALK
- - PROPOSED TRAFFIC SIGNALS
- - POTENTIAL PUBLIC SPACES
- - LEGAL RIGHT-OF-WAY LINE
- - PUBLIC SETBACK LINE

NEARMAP IMAGE TAKEN ON: 10/9/2025



SEE SHEET 2 OF 7

File: KOP-RENNPARK-ROWY-AEVAL.dwg Layout: KOP-RENNPARK-1 Plotted: 4/28/26 at 2:45pm By: AndySanborn



**KING OF PRUSSIA DISTRICT  
RENAISSANCE PARK  
ROADWAY PLAN**



**LEGEND:**

- PROPOSED ASPHALT TRAIL
- PROPOSED CONCRETE SIDEWALK
- PROPOSED TRAFFIC SIGNALS
- POTENTIAL PUBLIC SPACES
- - - LEGAL RIGHT-OF-WAY LINE
- PUBLIC SETBACK LINE



DISTRICT	COUNTY	ROUTE	SECTION	SHEET
6-0	MONTGOMERY	0000	RENN	2 OF 7
UPPER MERION TOWNSHIP				
REVISION NUMBER	REVISIONS	BY	DATE	



File: KOP-RENNPARK-RDWAY-AERIAL.dwg Layout: KOP-RENNPARK-2 Plotted: 4/28/24 at 2:45pm By: Amy/Sarabon

SEE SHEET 1 OF 7

SEE SHEET 3 OF 7

NEARMAP IMAGE TAKEN ON: 10/9/2025





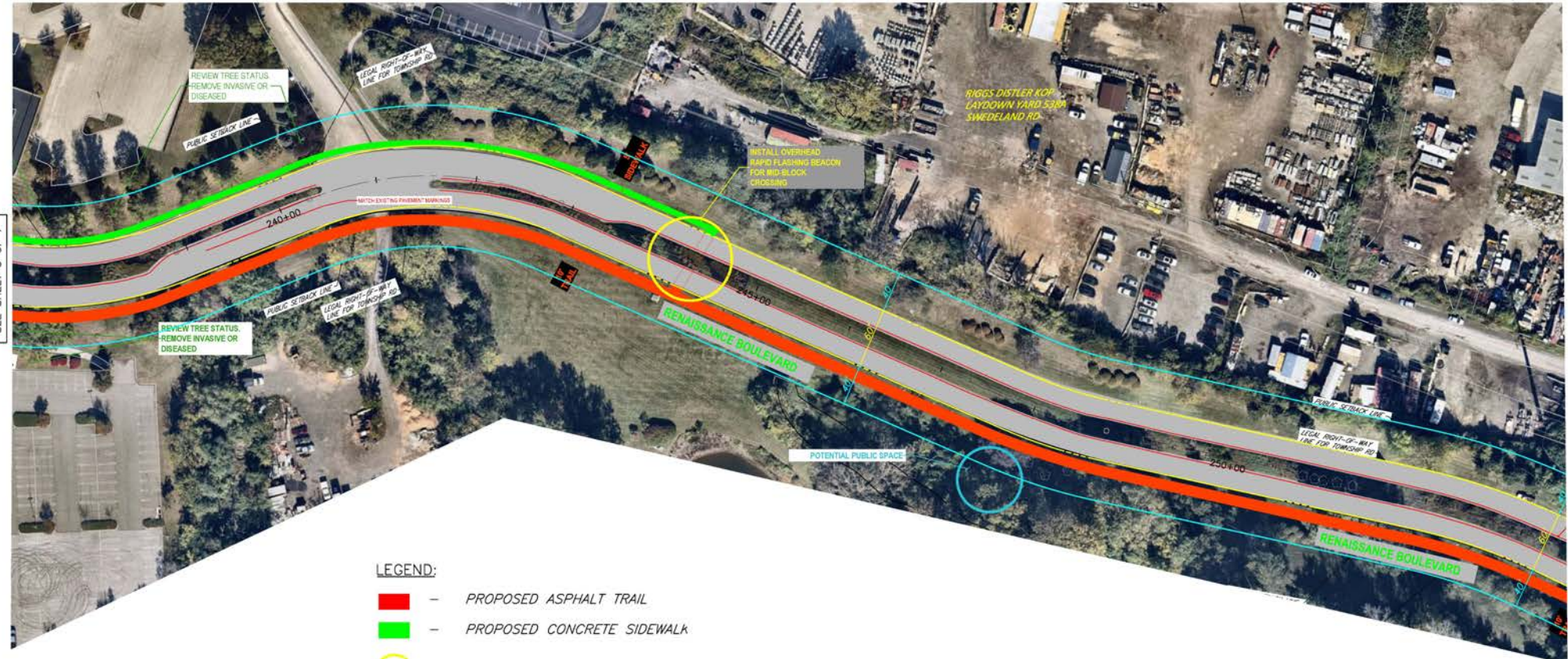
**KING OF PRUSSIA DISTRICT**  
**RENAISSANCE PARK**  
**ROADWAY PLAN**



DISTRICT	COUNTY	ROUTE	SECTION	SHEET
6-0	MONTGOMERY	0000	RENN	4 OF 7
UPPER MERION TOWNSHIP				
REVISION NUMBER	REVISIONS	BY	DATE	



NEARMAP IMAGE TAKEN ON: 10/9/2025



SEE SHEET 3 OF 7

SEE SHEET 5 OF 7

**LEGEND:**

- PROPOSED ASPHALT TRAIL
- PROPOSED CONCRETE SIDEWALK
- PROPOSED TRAFFIC SIGNALS
- POTENTIAL PUBLIC SPACES
- LEGAL RIGHT-OF-WAY LINE
- PUBLIC SETBACK LINE



File: KOP-RENNPARK-RDWAY-MEAL.dwg Layout: KOP-RENNPARK-4 Plotted: 4/28/26 at 2:45pm By: AmySanborn



**KING OF PRUSSIA DISTRICT  
RENAISSANCE PARK  
ROADWAY PLAN**



**Boles Smyth**

DISTRICT	COUNTY	ROUTE	SECTION	SHEET
6-0	MONTGOMERY	0000	RENN	5 OF 7
UPPER MERION TOWNSHIP				
REVISION NUMBER	REVISIONS	BY	DATE	

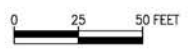


SEE SHEET 4 OF 7

NEARMAP IMAGE TAKEN ON: 10/9/2025

**LEGEND:**

- - PROPOSED ASPHALT TRAIL
- - PROPOSED CONCRETE SIDEWALK
- - PROPOSED TRAFFIC SIGNALS
- - POTENTIAL PUBLIC SPACES
- LEGAL RIGHT-OF-WAY LINE
- PUBLIC SETBACK LINE



File: KOP-RENNPARK-RDWAY-AERIAL.dwg Layout: KOP-RENNPARK-5 Plotted: 4/28/26 at 2:45pm By: AndySanborn

**KING OF PRUSSIA DISTRICT  
RENAISSANCE PARK  
ROADWAY PLAN**



- LEGEND:**
- PROPOSED ASPHALT TRAIL
  - PROPOSED CONCRETE SIDEWALK
  - PROPOSED TRAFFIC SIGNALS
  - POTENTIAL PUBLIC SPACES
  - LEGAL RIGHT-OF-WAY LINE
  - PUBLIC SETBACK LINE

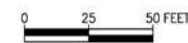


DISTRICT	COUNTY	ROUTE	SECTION	SHEET
6-0	MONTGOMERY	0000	RENN	6 OF 7
UPPER MERION TOWNSHIP				
REVISION NUMBER	REVISIONS			BY DATE



File: KOP-RENNPARK-RDWAY-AERIAL.dwg Layout: KOP-RENNPARK-6 Plotted: 4/28/26 at 2:45pm By: AnySantoro

SEE SHEET 7 OF 7



NEARMAP IMAGE TAKEN ON: 10/9/2025



**KING OF PRUSSIA DISTRICT  
RENAISSANCE PARK  
ROADWAY PLAN**

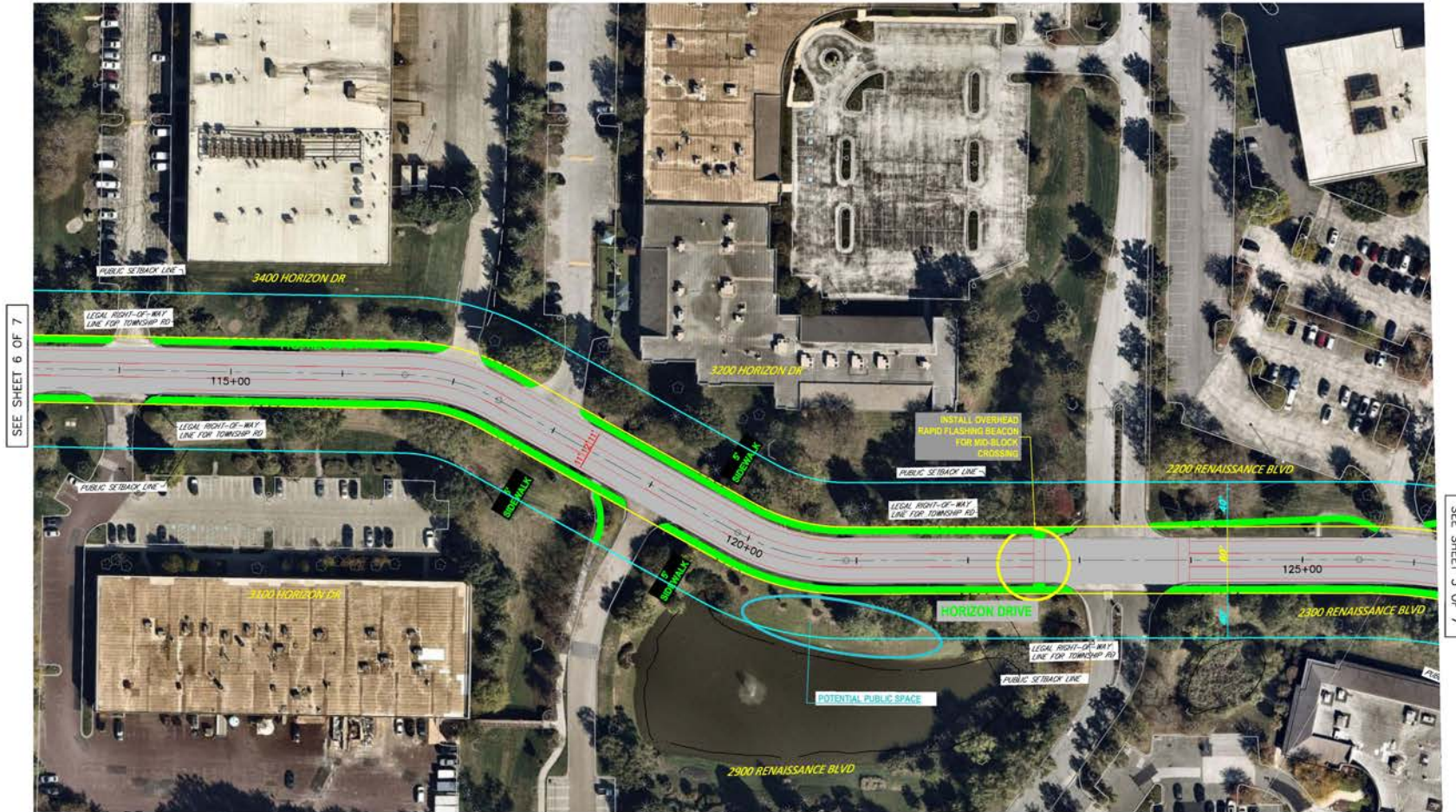


**LEGEND:**

- - PROPOSED ASPHALT TRAIL
- - PROPOSED CONCRETE SIDEWALK
- - PROPOSED TRAFFIC SIGNALS
- - POTENTIAL PUBLIC SPACES
- - LEGAL RIGHT-OF-WAY LINE
- - PUBLIC SETBACK LINE



DISTRICT	COUNTY	ROUTE	SECTION	SHEET
6-0	MONTGOMERY	0000	RENN	7 OF 7
UPPER MERION TOWNSHIP				
REVISION NUMBER	REVISIONS	BY	DATE	



SEE SHEET 6 OF 7

SEE SHEET 3 OF 7

NEARMAP IMAGE TAKEN ON: 10/9/2025



File: KOP-RENNPARK-RDWAY-AERIAL.dwg Layout: KOP-RENNPARK-7 Plotted: 4/29/26 at 2:45pm By: AngBanborn



**KING OF PRUSSIA DISTRICT  
RENAISSANCE PARK  
ROADWAY PLAN**

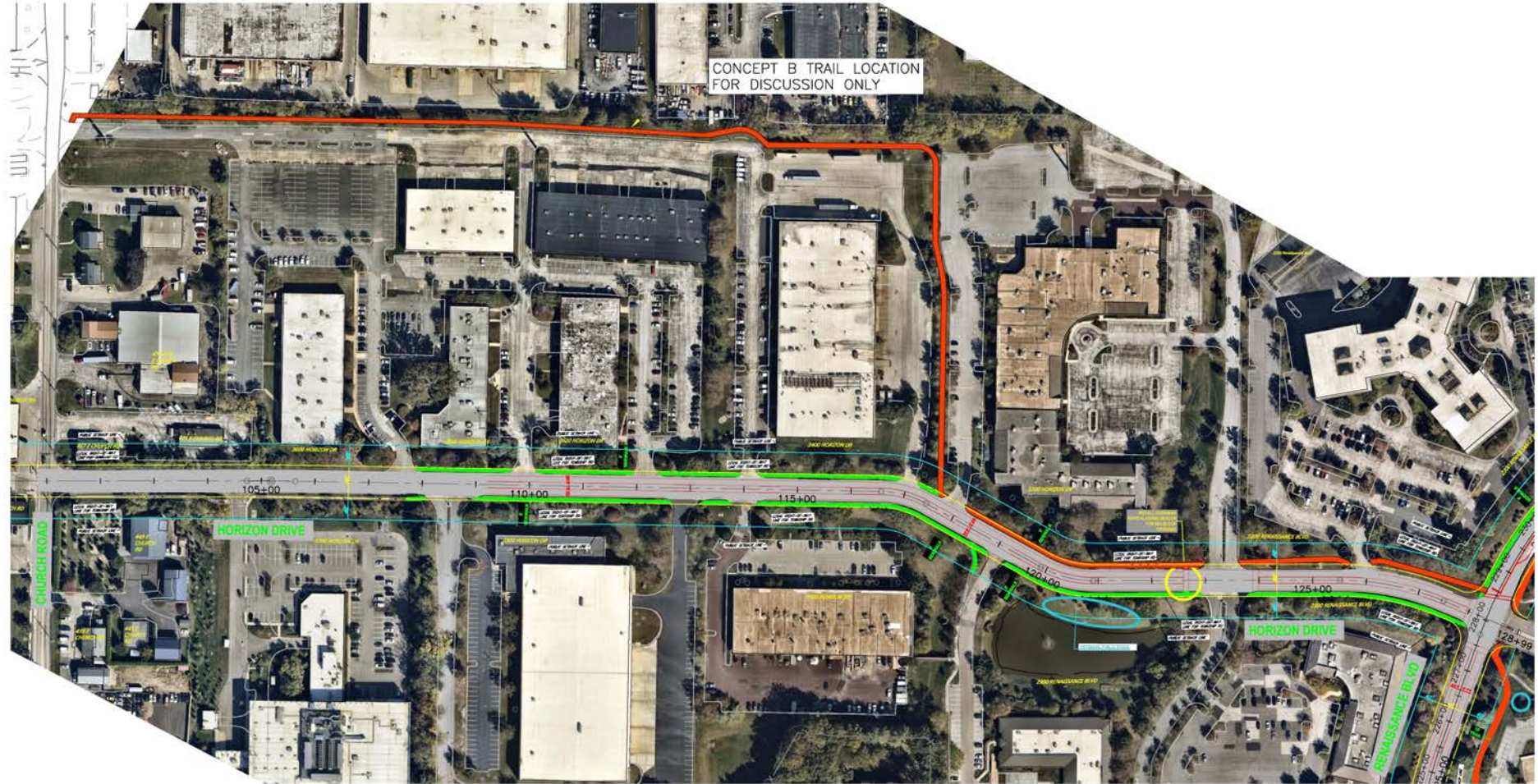


**LEGEND:**

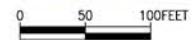
- PROPOSED ASPHALT TRAIL
- PROPOSED CONCRETE SIDEWALK
- PROPOSED TRAFFIC SIGNALS
- POTENTIAL PUBLIC SPACES
- - - LEGAL RIGHT-OF-WAY LINE
- PUBLIC SETBACK LINE



DISTRICT	COUNTY	ROUTE	SECTION	SHEET
6-0	MONTGOMERY	0000	RENN	1 OF 1
UPPER MERION TOWNSHIP				
REVISION NUMBER	REVISIONS	BY	DATE	



NEARMAP IMAGE TAKEN ON: 10/9/2025

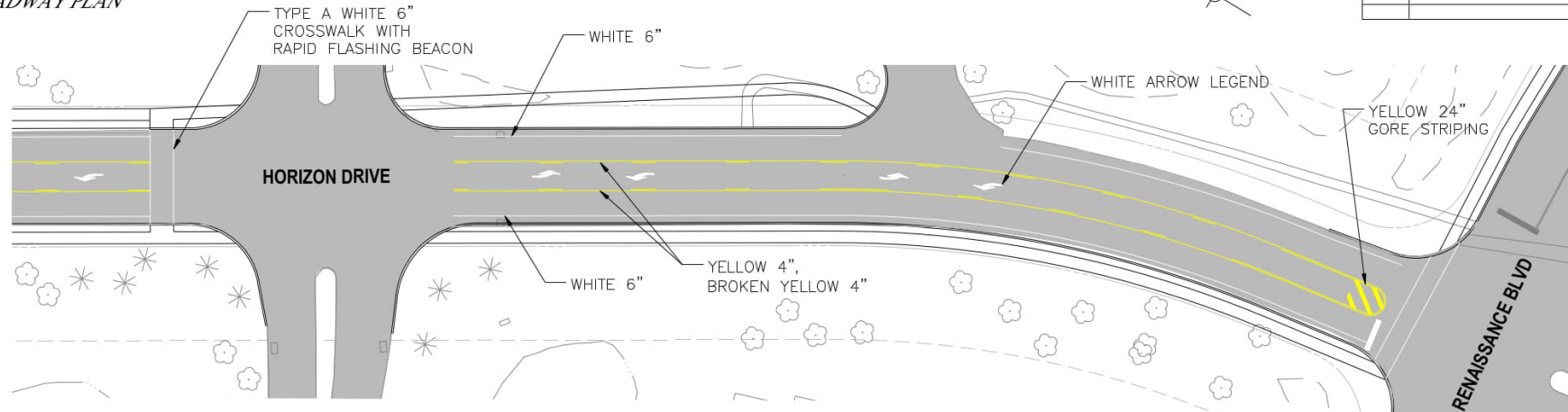


File: KOP-RENNPARK-ROW-NEVAL.dwg Layout: KOP-RENNPARK-101\_DPT\_LB Plotted: 4/28/26 at 2:45pm By: AndySornborn

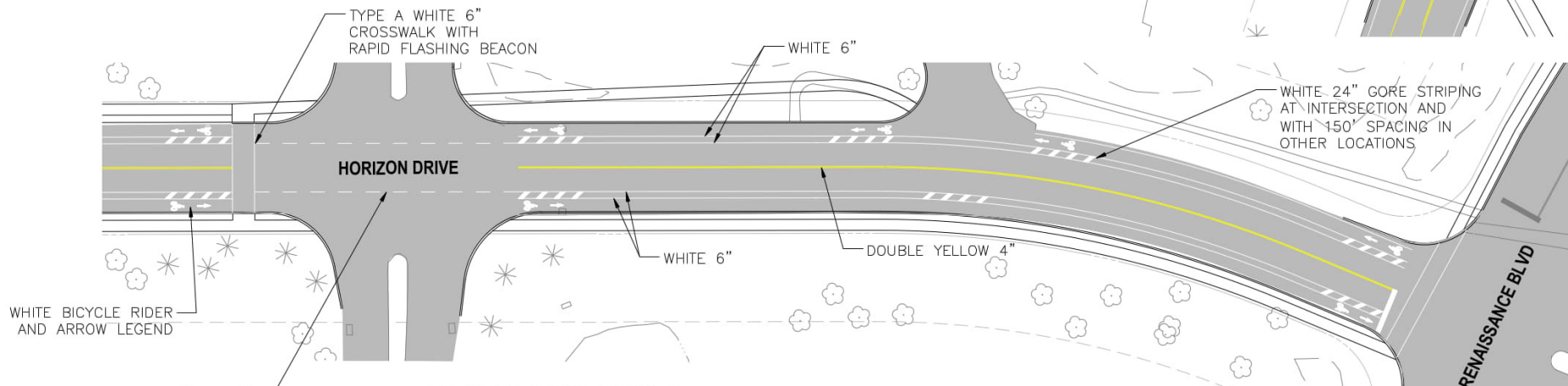


**KING OF PRUSSIA DISTRICT  
RENAISSANCE PARK  
ROADWAY PLAN**

DISTRICT	COUNTY	ROUTE	SECTION	SHEET	
6-0	MONTGOMERY	0000	RENN	1 OF 1	
UPPER MERION TOWNSHIP					
REVISION NUMBER	REVISIONS			BY	DATE

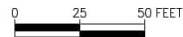


PAVEMENT MARKING OPTION 1



PAVEMENT MARKING OPTION 2

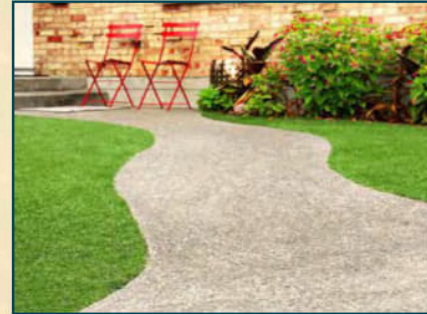
NOTE: PAVEMENT MARKING OPTIONS MAY BE APPLIED INDEPENDENTLY TO RENAISSANCE BLVD AND/OR HORIZON DRIVE



File: Renn\_Park\_PVM.dwg Layout: MDP-RENNPARK-PVM\_Exhibit Plotted: 4/28/26 at 5:11pm By: AndySomborn



## PIEDMONT LOWLANDS



① Stone dust walkway flush with lawn



② Trash receptacle resembling vegetation



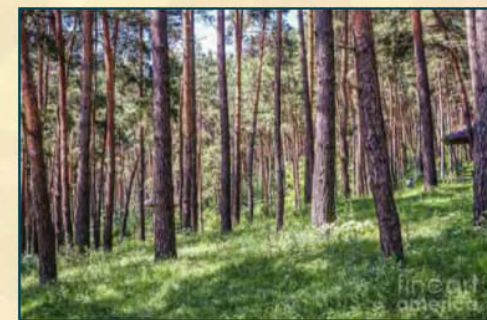
③ Colorful lounge benches



④ Colorful picnic table



⑤ Lounging lawn / picnic space

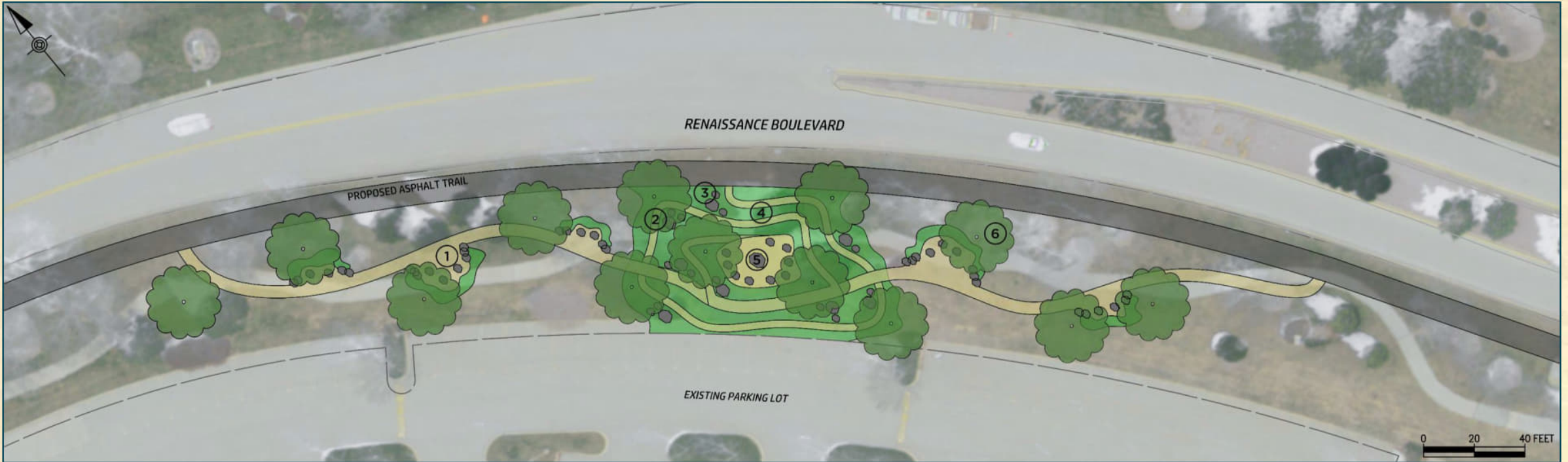


⑥ Black Pines with grassy understory



# Chester Valley Engineers

## APPALACHIAN UPLANDS



① Boulder seating



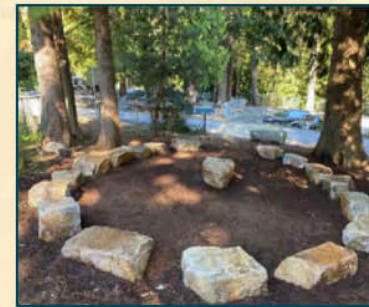
② Meandering trail through the forest



③ Large trailside boulders found in the Uplands



④ Winding stone dust Upland trail



⑤ Gathering circle with boulder seating

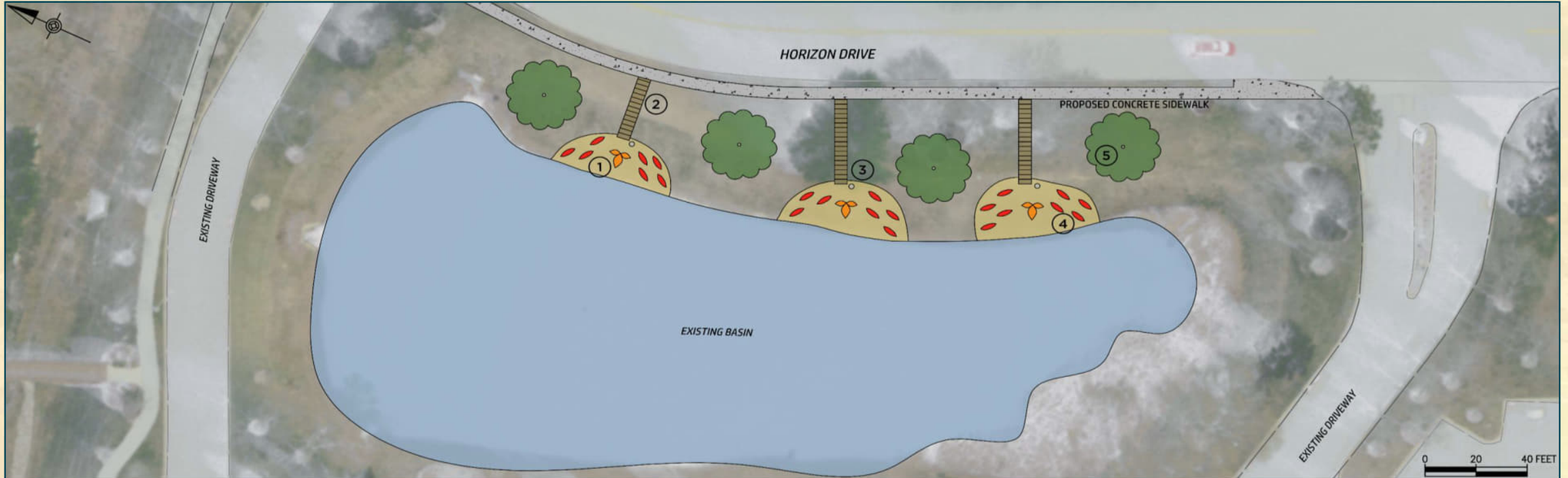


⑥ Trailside River Birch in the Uplands

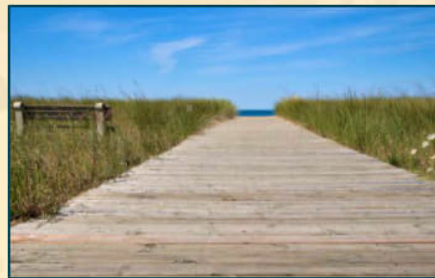


# Chester Valley Engineers

## COASTAL PLAINS



① Sculptural sun shade



② Boardwalk leading to the coast



③ Colorful coastal theme trash receptacles



④ Permanent lounging hammocks



⑤ Red Maple in the Coastal Plain



# Chester Valley Engineers

## PUBLIC ART



Eyeglasses framing the view of Matsunk Creek

Image courtesy of YouFine Art and Sculpture



Sculpture in front of the Conshohocken Brew Pub

Crushed beer can sculpture by Carl Unnash